

Paper ID 398

Supplementary Materials

Same as in figure 8 but for the whole database:
Detection using articulated templates (4 parts). 1st/5th column: image. 2nd/6th column: over-segmentation of the image. 3rd/7th column: the closest mask to the ground truth label among the top 10 hypothesis for each of the 4 body parts. 4th/8th column: the foreground detected object.

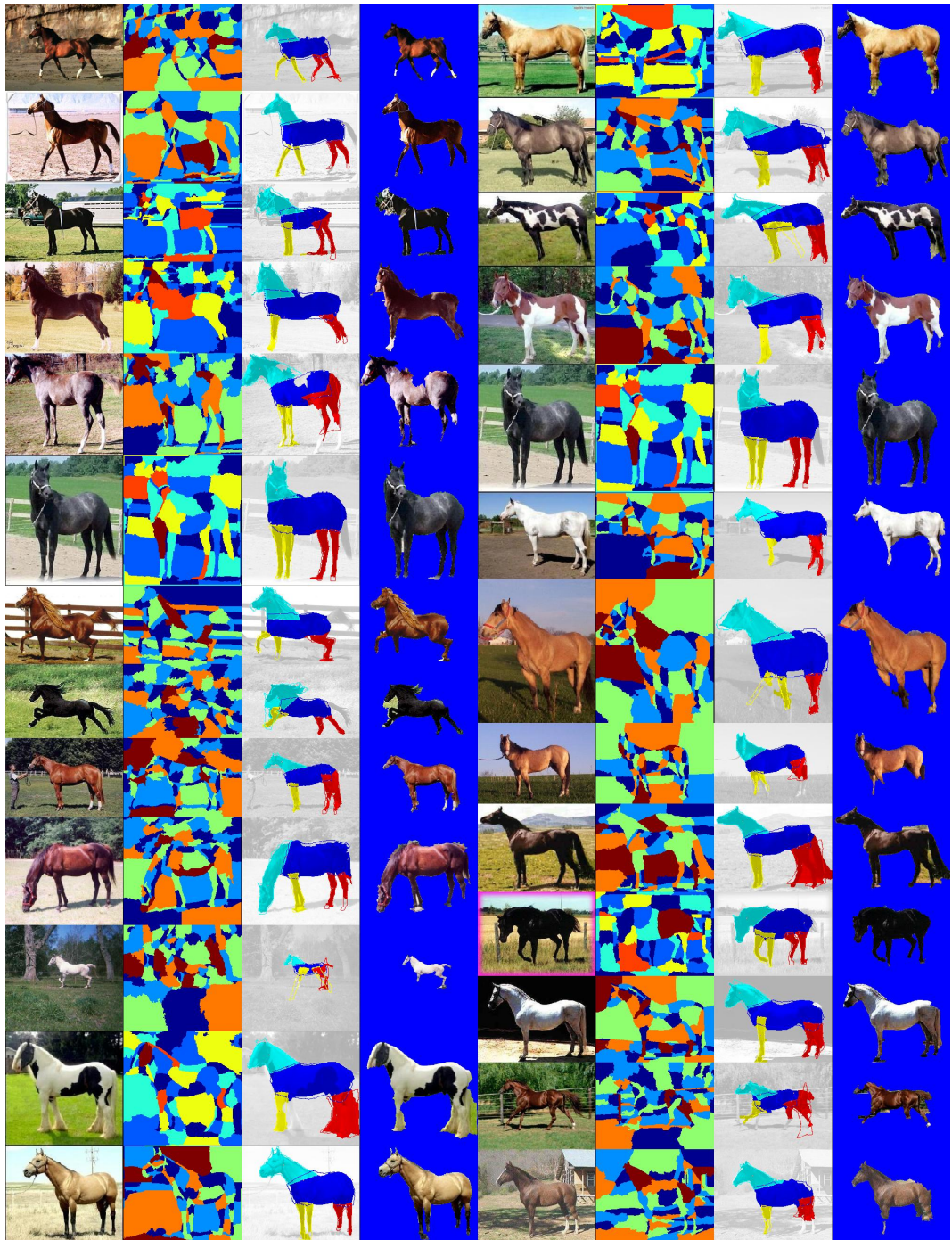


Figure 1:

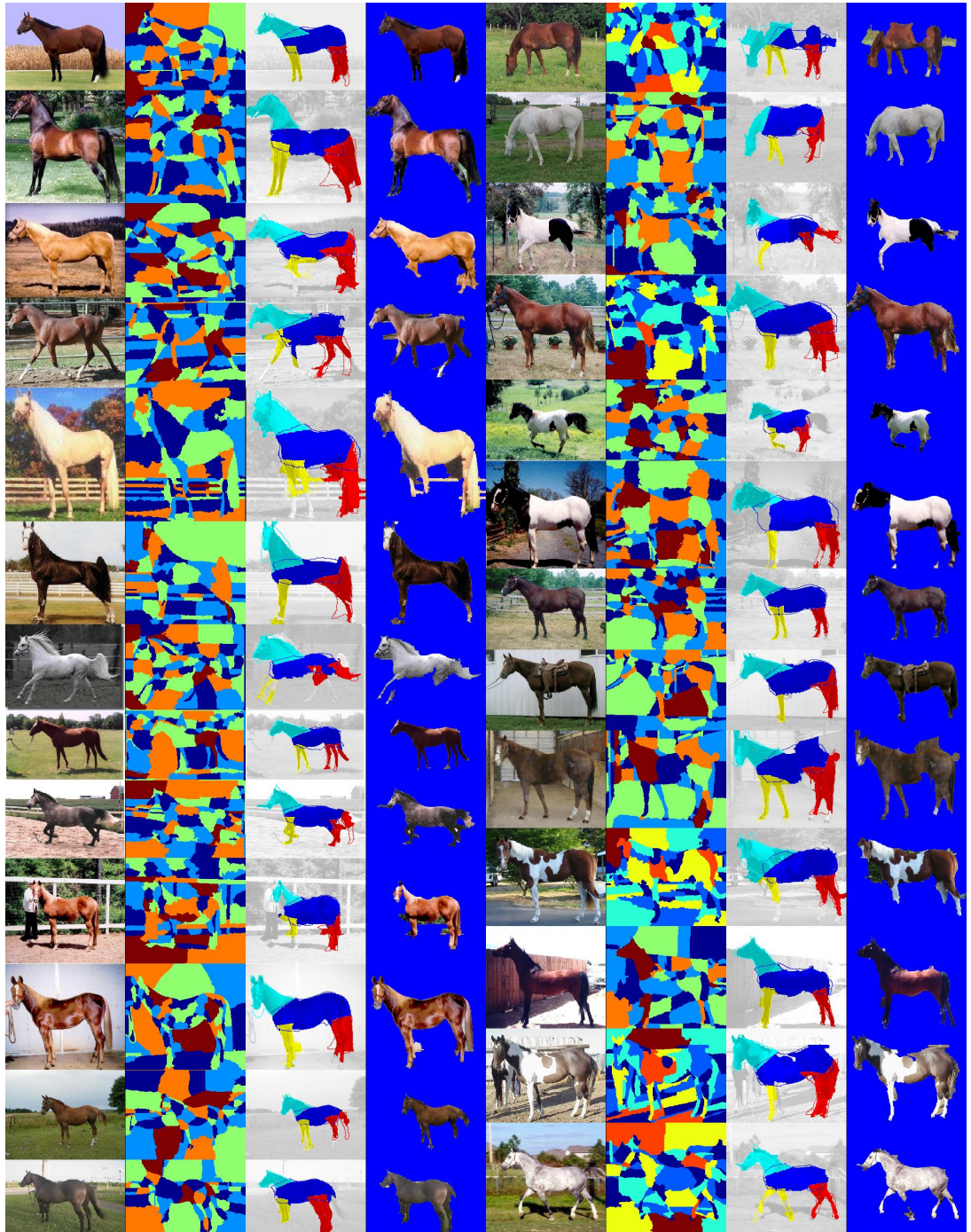


Figure 2:

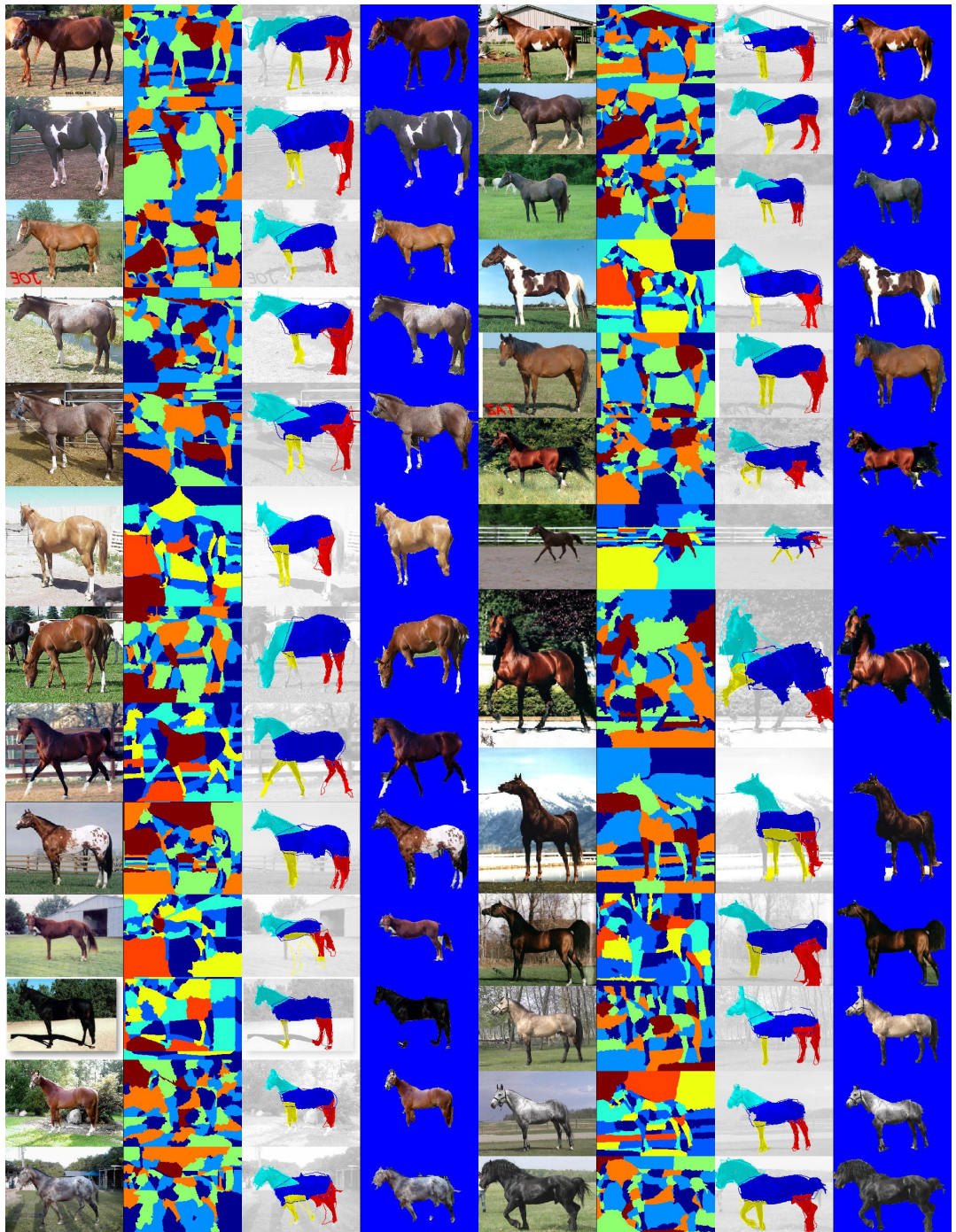


Figure 3:

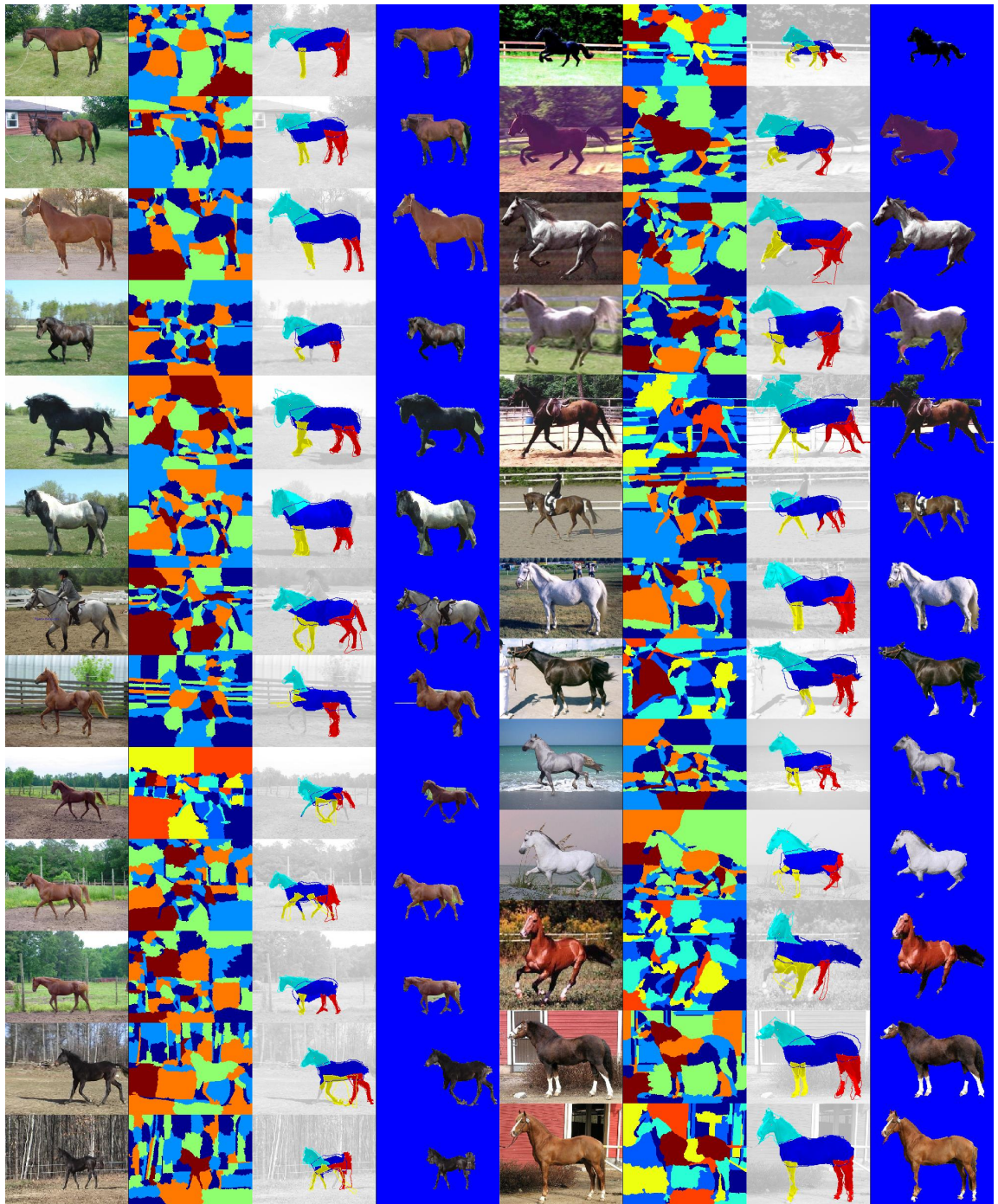


Figure 4:

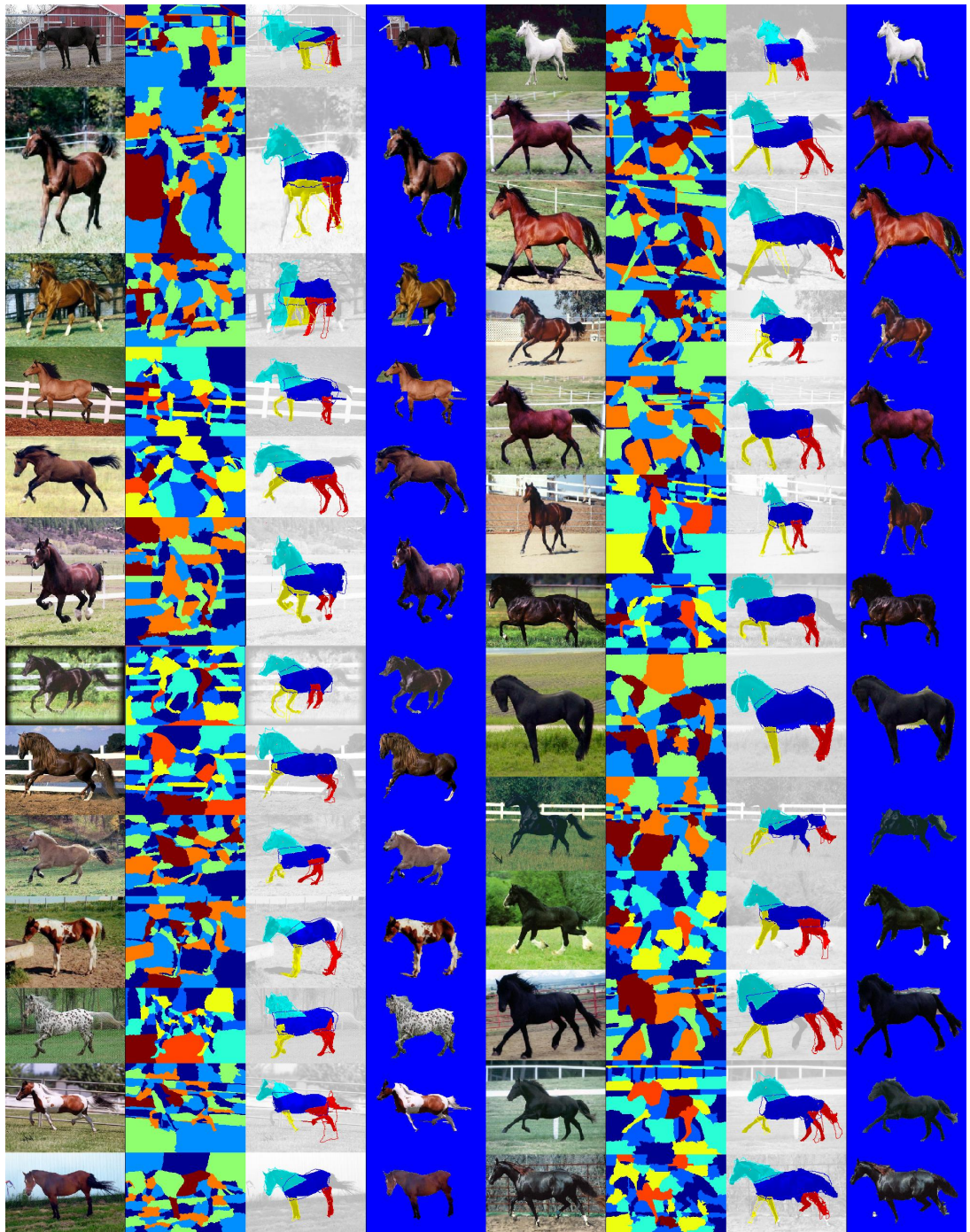


Figure 5:

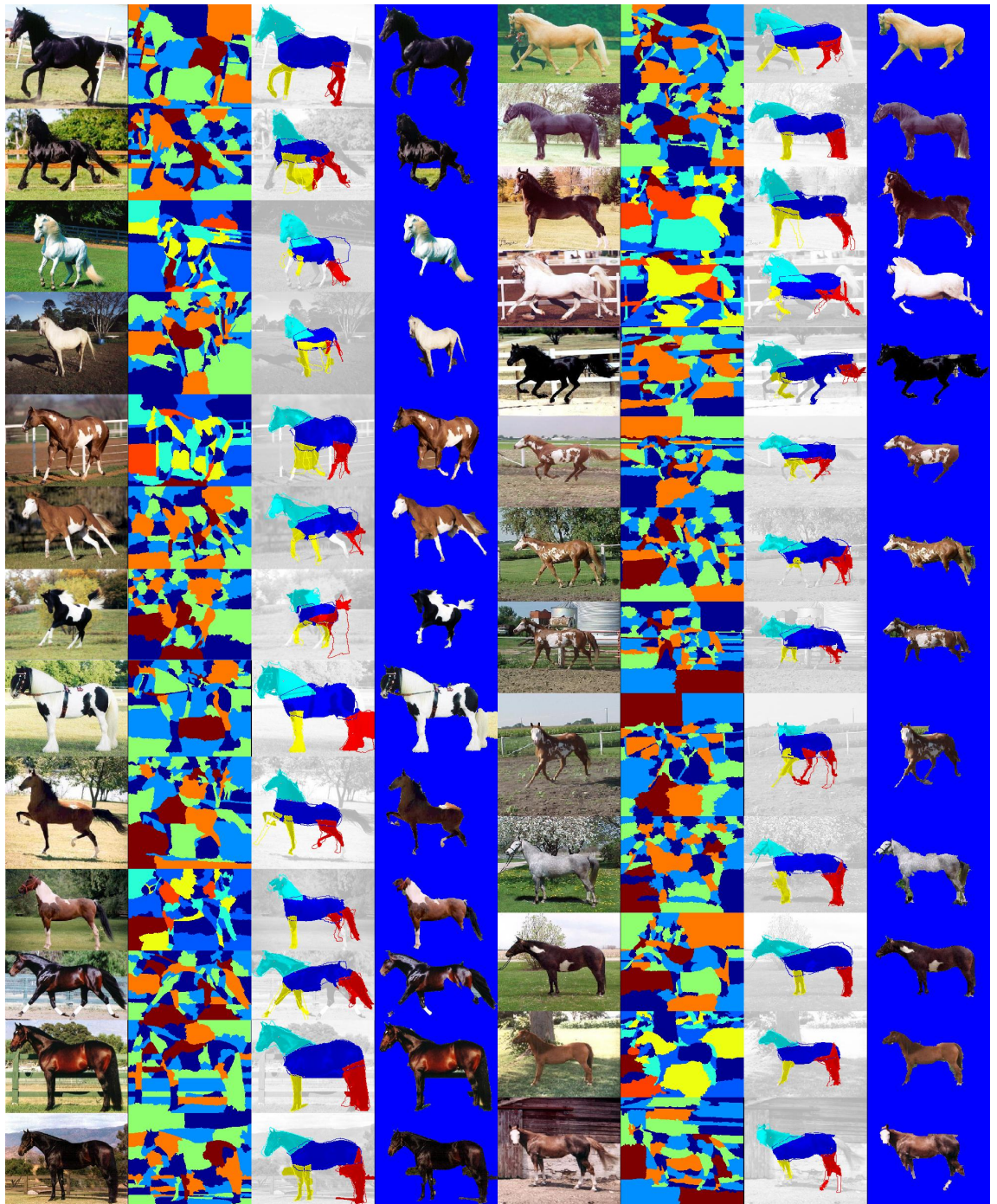


Figure 6:

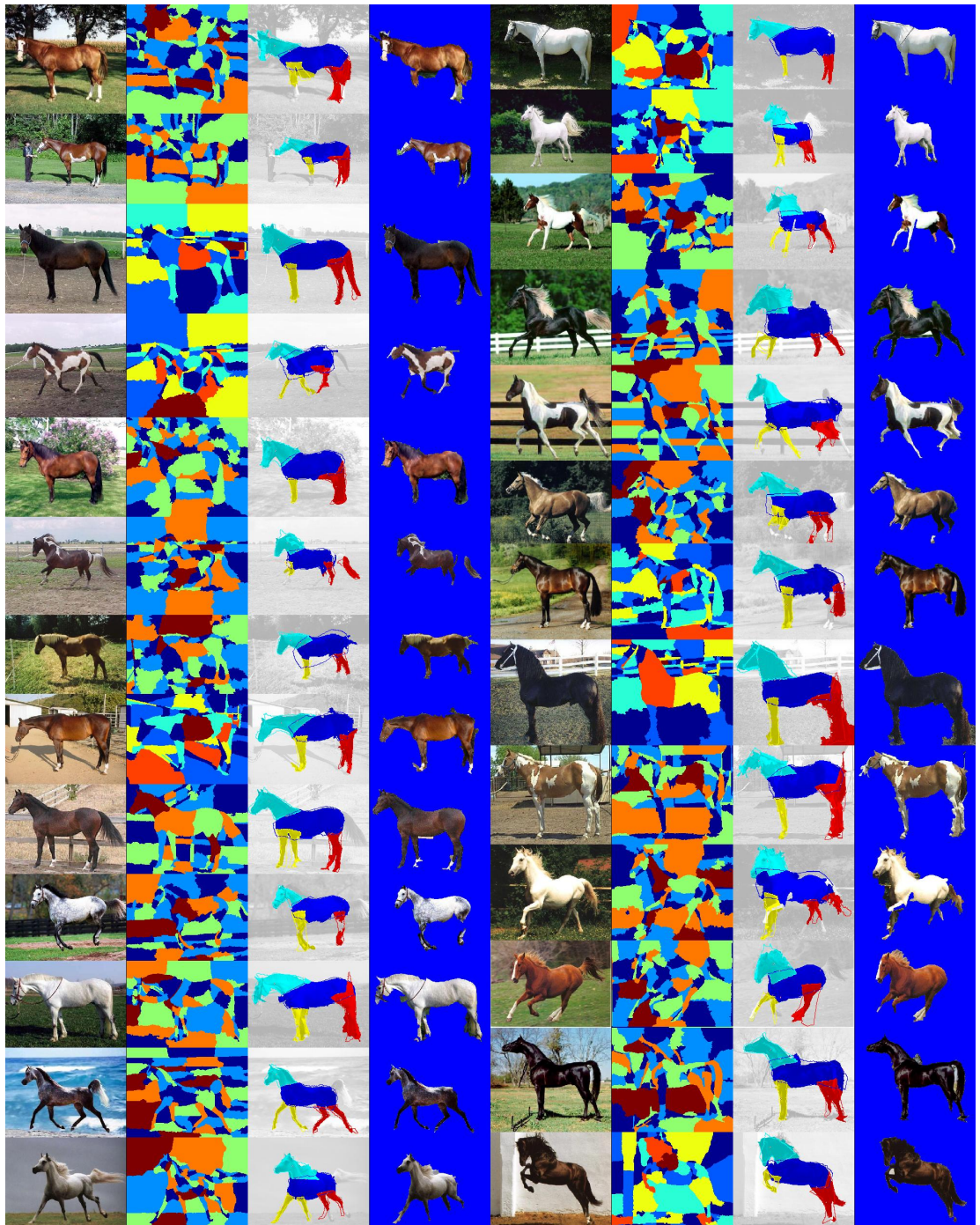


Figure 7:

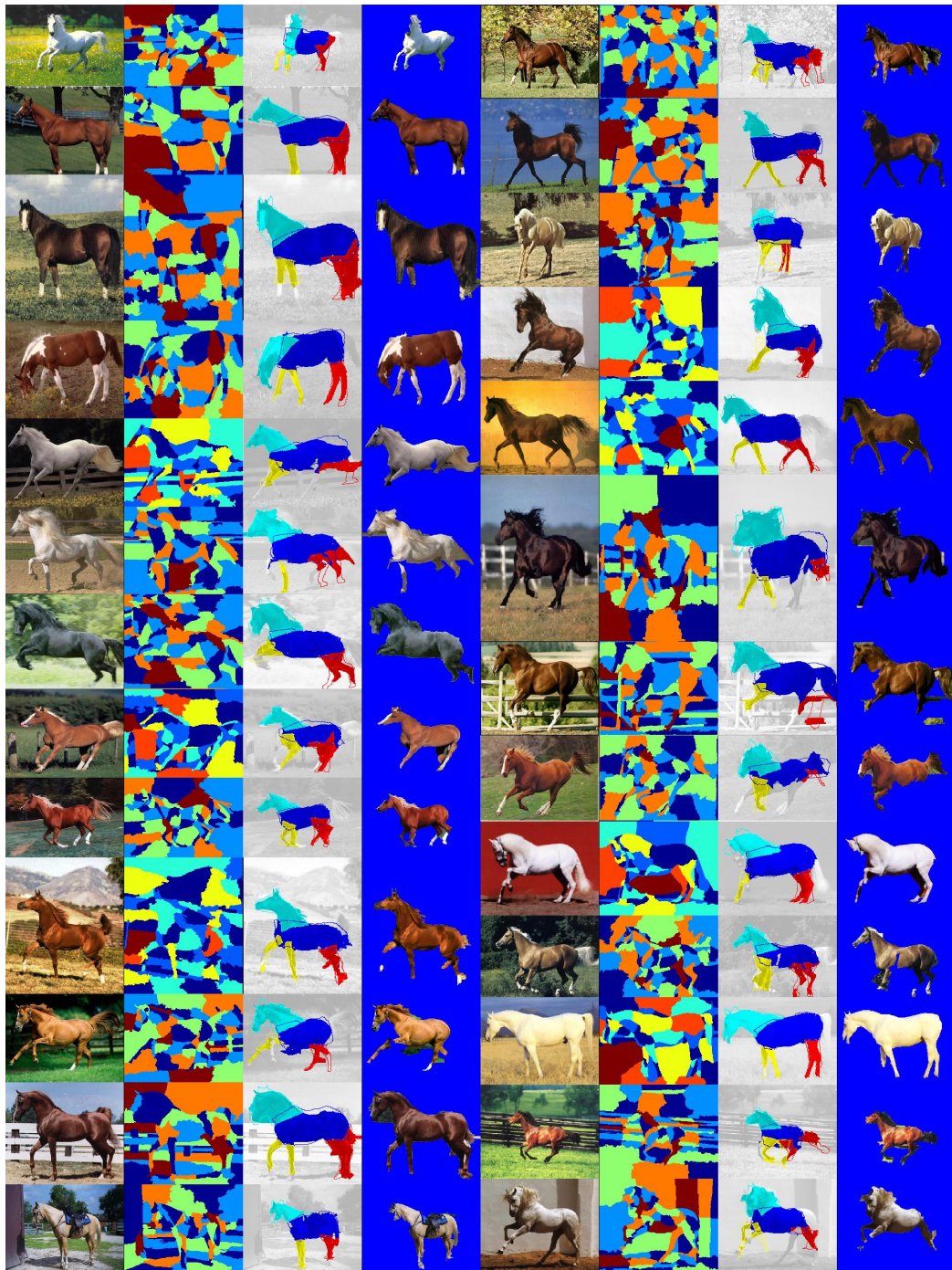


Figure 8:

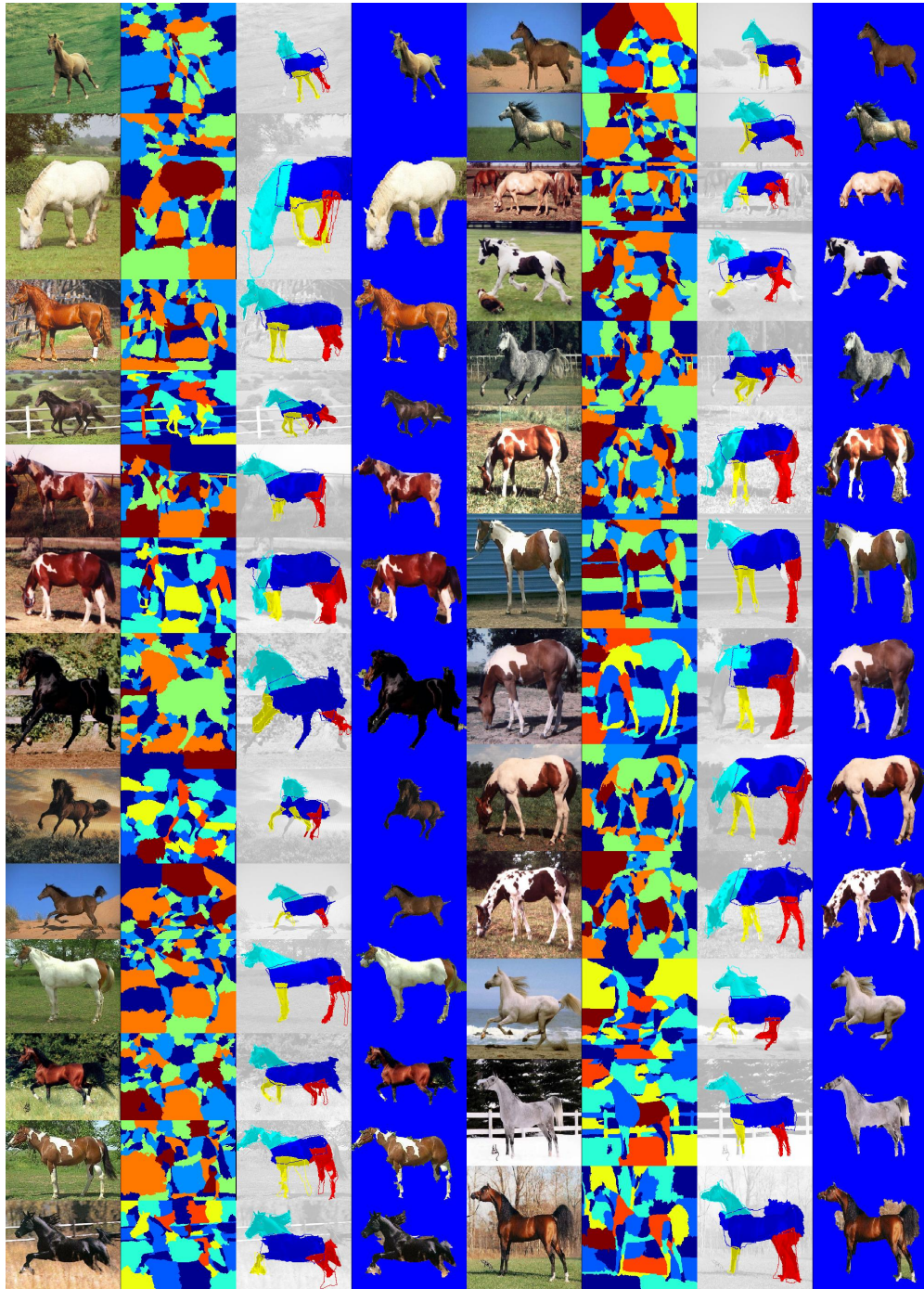


Figure 9:

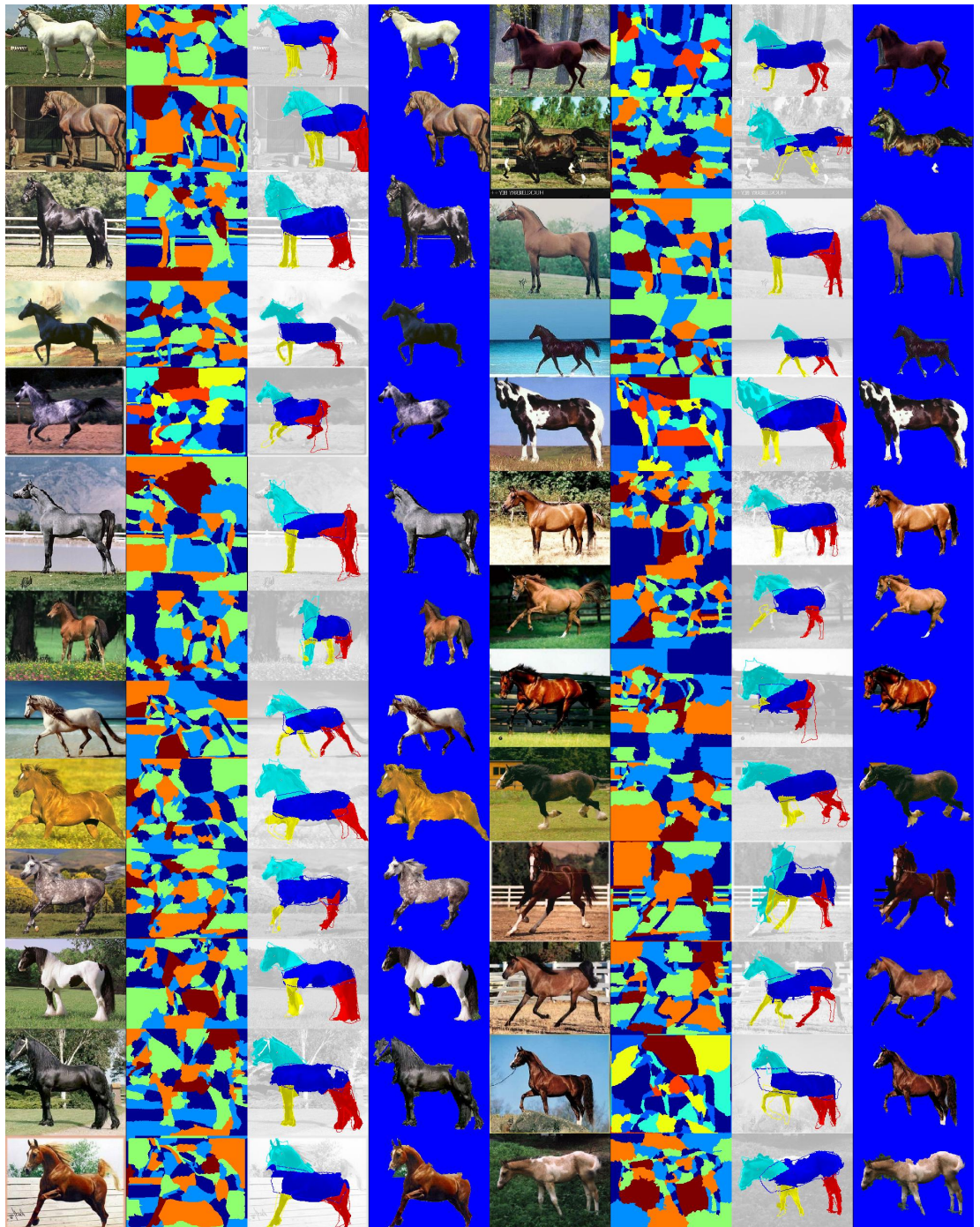


Figure 10:

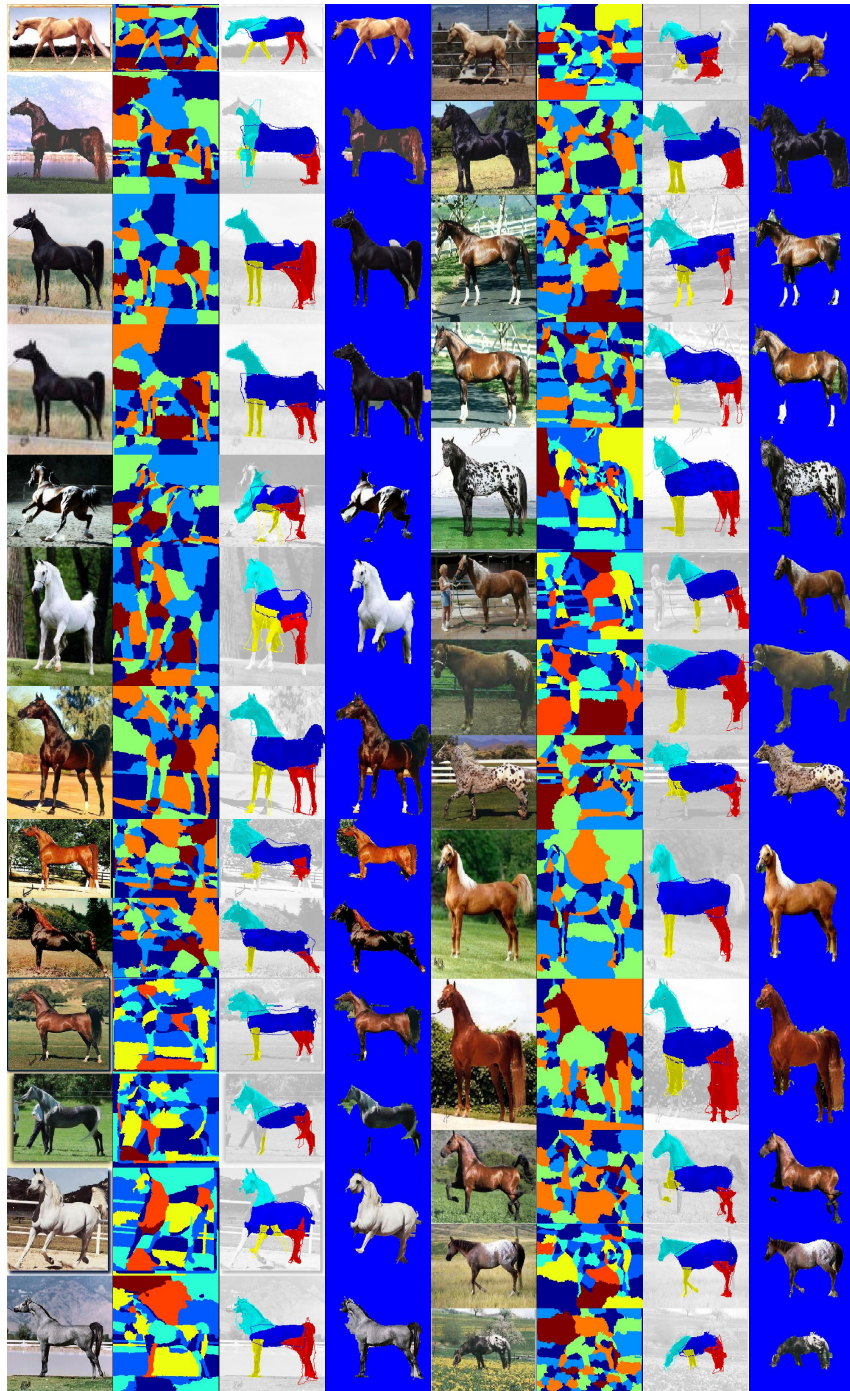


Figure 11:

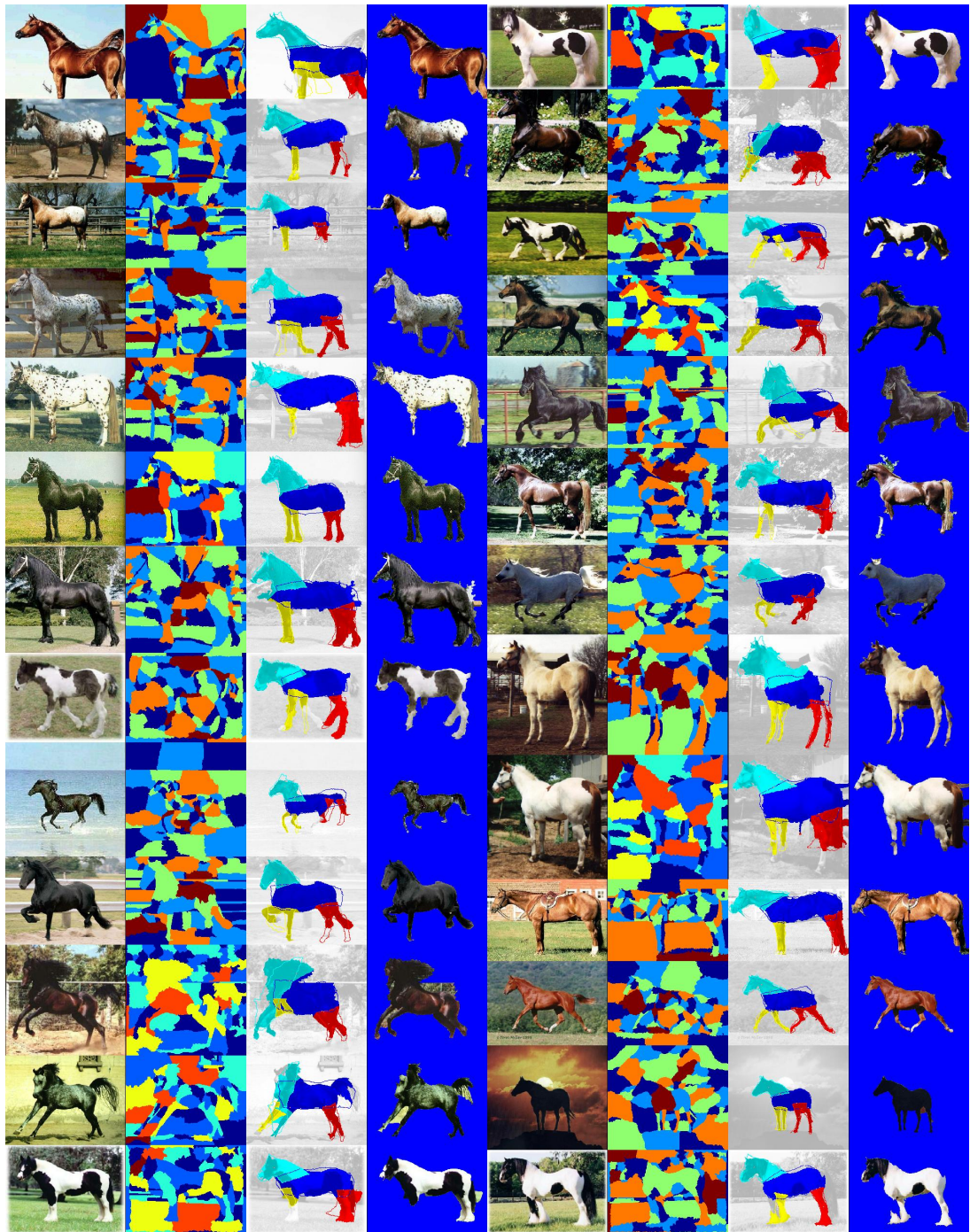


Figure 12:



Figure 13: